

**THINK**  
*Urban*

# CASTLE HILL Terrace

**PRICES**

FHA Approved

## Unit 1

FOR SALE • \$229,000

- HOA \$234
- 760 TOTAL Living Area
- 491' Interior
- Est Taxes \$5373
- Studio - 1 Car Space

## Unit 2



## Unit 3

FOR SALE • \$219,000

- HOA \$222
- 723 TOTAL Living Area
- 491' Interior
- Est Taxes \$5094
- Studio - 1 Car Space

## Unit 4



## Unit 5



## Unit 6

FOR SALE • \$135,000

- HOA \$160
- 550 TOTAL Living Area
- 390' Interior
- Est Taxes \$3967
- Studio - 1 Car Space

## Unit 7



## Unit 8



## Unit 9



## Unit 10



## Unit 11

FOR SALE • \$189,000

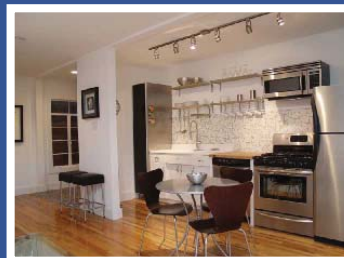
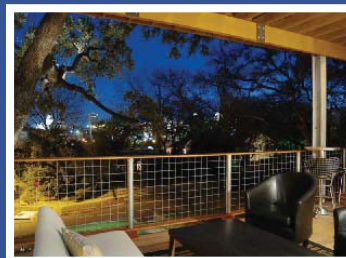
- HOA \$175
- 520 TOTAL Living Area
- 380' Interior
- Est Taxes \$4019
- Studio - 1 Car Space

## Unit 12

PENDING • \$199,000

- HOA \$190
- 620 TOTAL Living Area
- 380' Interior
- Est Taxes \$4150
- Studio - 1 Car Space

## Unit 14



[www.youtube.com/castlehillterraces](http://www.youtube.com/castlehillterraces) • [www.austinterraces.com](http://www.austinterraces.com)

