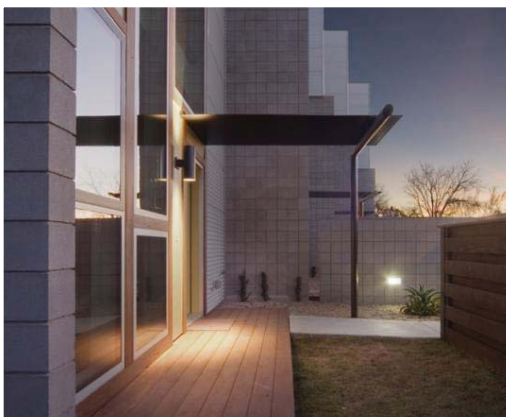
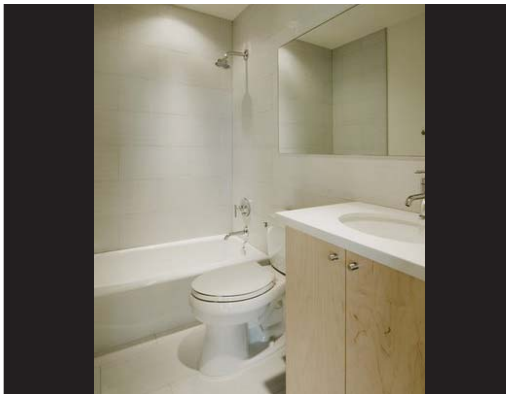




Guadalupe 5 Unit #5



LOCATION, CONVENIENCE, VALUE, GREEN FEATURES CENTRAL : N LAMAR/ W. 55TH, UT, THE TRIANGLE, CRESTVIEW STATION

Ideal Central location just North of "The Triangle", with numerous choices for shopping, eating, hanging out, studying, or listening to music! Large 2 bed/2 bath, 1180 sq. ft. open floor plan with 2 levels and 2 parking spaces. Numerous green features such as low E insulated double paned windows and tankless water heaters. Exposed CMU walls, high vaulted ceilings, solid core doors.

- Michael hsu design: modern, sleek, spacious, stunning
- Striking glass tile, granite countertops, bamboo flooring, & beautiful sealed concrete
- Bosch Stainless Steel Appliances
- Built in 2008 / HOA/maint. \$150/mo. / Private Yard

Offered at \$346,913

502 W. 55th St., #5

PERRY HENDERSON

The Live Well Team

512.791.7462

www.perryhenderson.com



"Information deemed reliable, but not guaranteed. Buyer must verify."